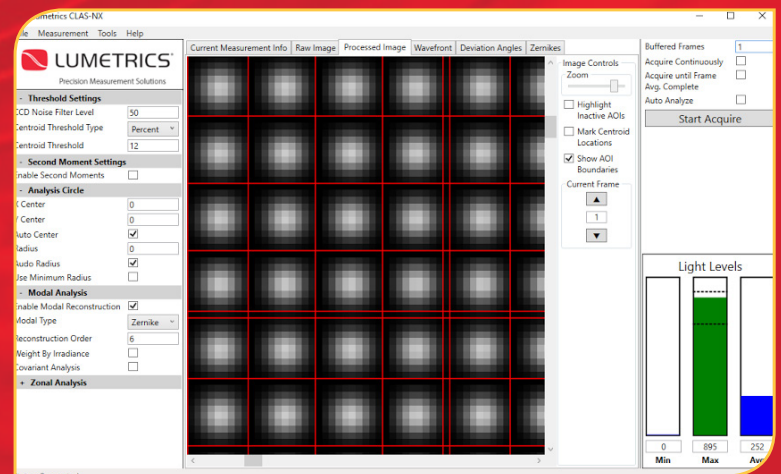


# CLAS-NX™

## Complete Light Analysis System Software



Lumetrics, Inc. has developed the next generation of Complete Light Analysis System (CLAS) software within its line of wavefront sensing instruments. CLAS-NX operates on the latest windows platform. This is new software, and provides a single window intuitive interface.

Rather than managing multiple windows with settings spread out across them or buried within multiple submenus, the most important and commonly used functions are organized within a series of tabs and expandable sections. This new layout embodies modern user interface standards and results in a more intuitive software interface.

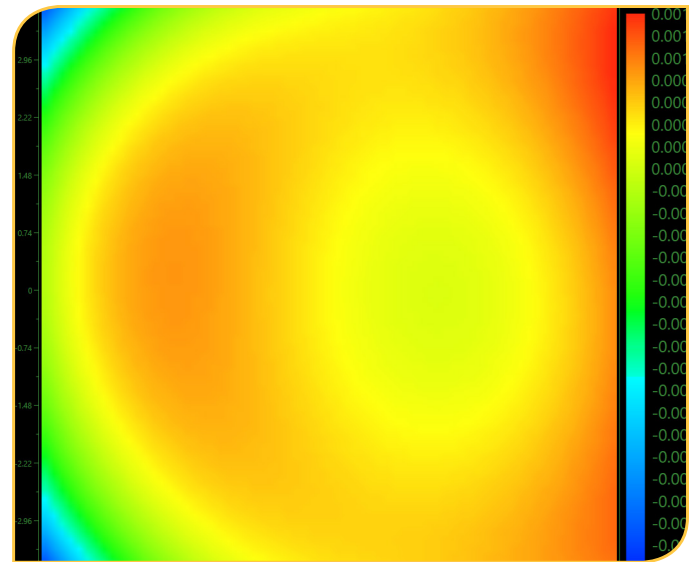
CLAS-NX software available July 2017 to operate the following series of wavefront sensors:

- CLAS-XP
- CLAS-IR
- CLAS-FX (USB 3.0)

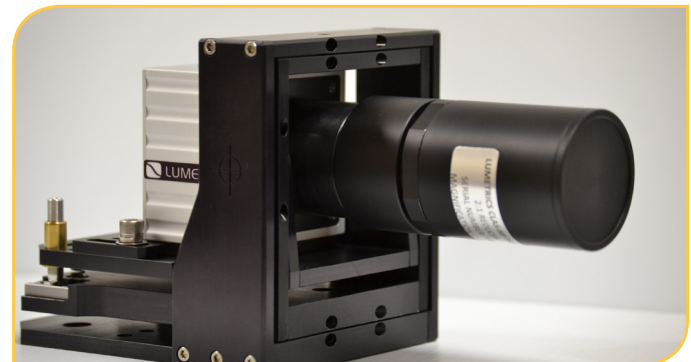
### Advantages of CLAS-NX Software over CLAS-2D

- Compatible with Windows 7/10
- Light level display is now prominently displayed on the main screen, making it easy to determine when the system is in a good operating state
- Acquisition controls are also on the main screen to quickly grab a data snapshot

CLAS-NX has streamlined the measurement process. A series of user prompts and machine feedback allow even a novice to achieve proper measurement configuration.



Wavefront Map



## About Lumetrics

For more than a decade, Lumetrics has provided precision measurement solutions to leading edge companies throughout the world. Our systems are deployed in quality, R&D labs, and production floors.



CLAS-NX software combined with the Shack-Hartmann wavefront sensor is ideal for analyzing photonic products and materials.

### CLAS-NX Software:

- Single-window, simplified user interface
- Reduced operator training with a streamlined measurement process
- Features performance demanded by the scientific community

**1565 Jefferson Rd, #420  
Rochester, NY 14623  
585-214-2455**

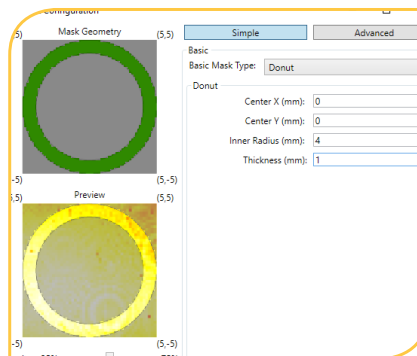
**sales@lumetrics.com  
engineering@lumetrics.com**

**[www.lumetrics.com](http://www.lumetrics.com)**

## Masks:

Masks creation is one of the most powerful features of the new CLAS-NX. This feature allows the user to set a limiting aperture to the measurement window, as well as block out hotspots and other artifacts.

Mask generation is done through numerical input. For example, a circular mask is defined by a center point and radius. Additionally, a series of preset mask types have been created to make mask generation even quicker.



## New Wavefront Sensor Support:

The supported interfaces for wavefront sensors has been expanded. This allows customers to provide their own computer for use and a lower overall system cost. Interfaces include:

- CameraLink
- USB3
- USB2 \*
- GigE \*
- FireWire \*

In addition, different types of sensors are available, including:

- High sensitivity
- InGaAs
- High speed

This selection of new camera interfaces offers greater flexibility when designing custom wavefront sensors to meet a unique customer project requirement. The aforementioned features are developed while keeping performance in mind. Users still have access to the powerful features that made the previous software platform, CLAS-2D, well-known and respected in the scientific community. These features have been reorganized to be more intuitive and easy to find.

As an available option, using the new API Toolkit (sold separately), provides engineers and scientists greater flexibility during development of their own software applications written in:

- Python
- Matlab
- .NET

When combined with the new API layer, the CLAS-NX software enables the end user with the unparalleled access to the raw and processed wavefront data, settings, and post processing.

\*Not available at launch